



Specification

Stock No	643181
Type	ELECTRIC
Make	EP
Model	EFL1603-HV-12
Year	2024
Euromast	2W420
Hours	0
Capacity	16000 kg
Lift height	4200
Values	
Quality Rating	5

Wheels

Tyres type	Superelastic
Dimensions	
Lift height (h3)	4200 mm
Forks length (l)	2400 mm
Forks height (s)	100 mm
Forks width (e)	250 mm

Drive

Battery voltage/capacity	614V / 230Ah V/Ah
--------------------------	-------------------

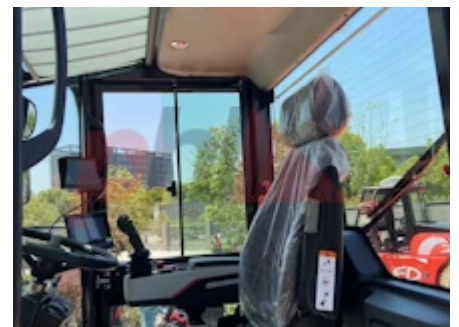
Attachment

Attachments (Has attachment)	Fork Positioner, Sideshift and Forks.
Attachment type (Attachment type)	Fork positioners

Engine

Engine type (Engine type)	electric
---------------------------	----------

Opinion



Phone: +44(0) 1784 818181
 Email: sales@phl.co.uk
 Website: https://www.phl.co.uk